

FIG. 1

OPERATION

The purpose and position of each control is shown in Fig. 1. To turn the receiver on, turn the volume control knob to the right until it clicks and the dial is illuminated. Rotation of the knob to the right increases the volume. To turn the receiver off, turn the volume control knob to the left until it clicks. The radio can be silenced when in operation by pressing the station selector knob lightly.

TONE CONTROL

The tone control can be set to any one of four positions by pushing the tone control knob. Some positions are useful in overcoming wind, noise, etc., while other positions bring out the full mellow tone of musical programs.

FOOT CONTROL

The foot control provides a convenient means of automatically selecting any one of five pre-set stations. A foot control on the floor board avoids necessity of removing the hands from the wheel, or the eyes from the road. Its function is identical to that of the station selector knob. Press the foot control all the way down to change stations. Press the button lightly to silence the radio. Release the foot switch to allow the radio to operate again.

NOTE: The receiver cannot be turned off by pressing the Foot Switch. The receiver volume control, on-off knob must be used for that purpose.

AUTOMATIC TUNING

The station selector knob (Fig. 1) permits the tuning of any one of the five pre-selected stations. In the position at which the light spot on the receiver dial is illuminated the receiver may be tuned manually by rotating the tuning control knob. The pointer behind the dial scale indicates the frequency to which the receiver is tuned.

SETTING THE AUTOMATIC TUNER

Pressing the station selector push knob (Fig. 1) repeatedly will cause the tuning mechanism to change through a cycle of six positions. Five of the automatic positions may be set for favorite local stations, while the sixth position at which the light dot on the dial scale is illuminated, is used for selecting stations manually.

Using the manual tuning position as a reference point, the remaining five positions may be adjusted in succession to any desired dial setting. However in order to simplify the identification of the stations, it is advisable to set the tuner in sequence according to the frequencies of the stations, beginning with the station broadcasting at the lowest frequency and progressing to the station broadcasting at the highest frequency.

Turn the receiver on and allow it to operate for at least 15 minutes in order for each part to reach normal operating temperature before making the proper setting.

1. Press the station selector knob until the light dot on the dial scale appears. Press the station selector knob once more to the No. 1 position.
2. To select the station desired, pull the tuning control knob outward and rotate at the same time. Tune very carefully for clearest reception.
3. Press station selector knob, pull and hold tuning control knob outward, and tune in station desired for No. 2 position. Use same procedure for positions No. 3, 4, and 5.

NOTE: When light dot on dial scale is illuminated, it is only necessary for the tuning control knob to be turned to select stations.

IMPORTANT

A Warranty Registration Tag is furnished with your radio. The tag must be completely filled in by the Nash dealer from whom you purchased your radio and attached to your radio when it is installed, in order that service stations may have the proper information when you require service under the Warranty.

WARRANTY

Your Nash receiver is covered by Warranty against defect in material and workmanship for a period of 90 days after delivery of the receiver.

HOW TO OBTAIN SERVICE

1. Return to your Nash dealer, or if you are traveling, go to the nearest Nash dealer.
2. The dealer will make preliminary checks and such minor repairs as replacing burnt out fuses, or repairing loose outside connections such as "A" lead, antenna, etc.
3. If the dealer has made these preliminary checks and tests and is unable to repair the receiver so that it performs satisfactorily, he will remove it from the car, and forward it to his local auto radio service station where warranty repairs will be made as covered by the Warranty policy. When the repairs are completed, the dealer will re-install the unit in your car.

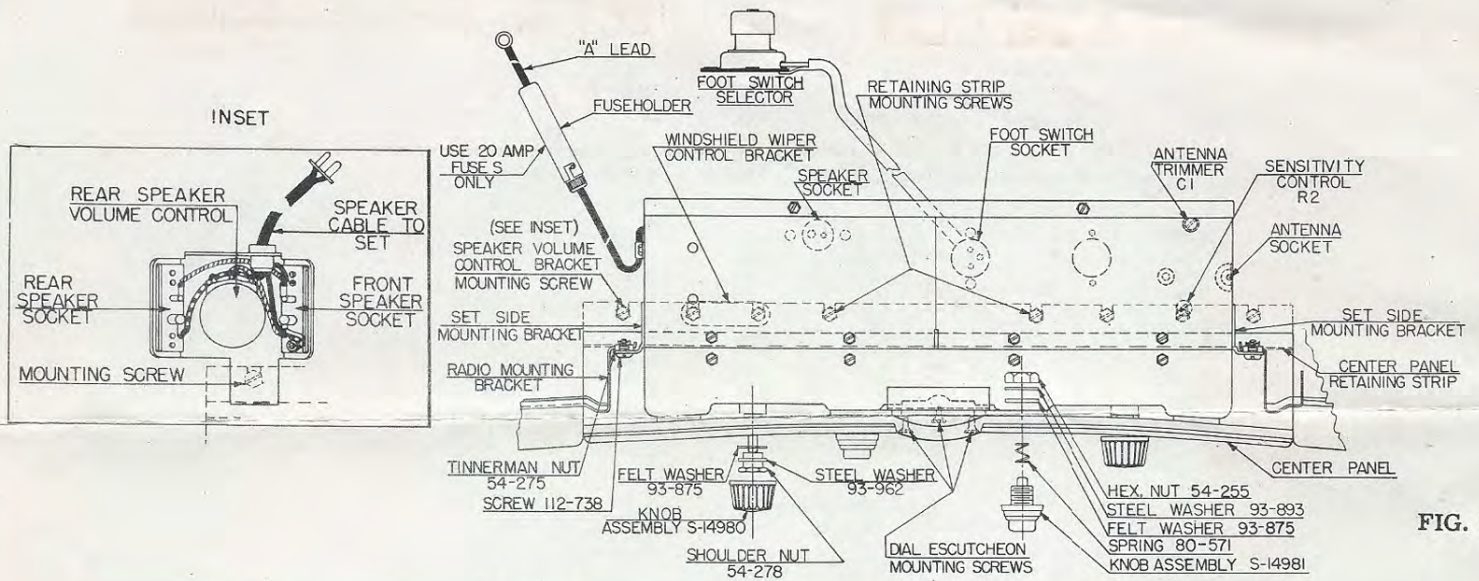


FIG. 2

INSTALLING THE RECEIVER

IMPORTANT: This receiver is designed to operate with the Nash Antenna, which should be installed before the receiver. Installation instructions are enclosed with the antenna.

1. Loosen all the 8/32 hex-head retaining strip mounting screws that hold the center panel retaining strip, and the windshield wiper control bracket in place. (Fig. 2)
2. Remove the dial scale trim plate from the top of the medallion. (Fig. 1)
3. Remove the center panel by pulling it forward and downward. (Fig. 2)
4. Clip the four tinnerman nuts #54-275 (supplied in the installation kit) over the four holes in the radio mounting brackets on the car. (Fig. 2)
5. Place the radio into position through the opening in the instrument panel with the holes of the set side mounting brackets in line with the holes of the tinnerman nuts.
6. Tighten the set into position with the four 10/32 machine screws #112-738 supplied in the installation kit.
7. Remove the medallion from the center panel by taking out the three Phillips head screws.
8. Replace medallion with dial escutcheon #57-1350 furnished in kit, and fasten with the three Phillips head screws.
9. Remove the four buttons from the center panel.
10. Place the tone control knob assembly #S-14981 and the station selector knob assembly #S-14981 into the two holes on each side of the dial escutcheon. Place the button return springs #80-571 over the shafts, and fasten the assemblies to the center panel with the felt washers #93-875, the steel washers #93-893 and the hex nuts #54-255. (Fig. 2)
11. Replace the center panel by hooking it under the panel retaining strip and placing it over the volume and tuning control shafts. (Fig. 2)
12. Assemble felt washer #93-875, steel washer #93-962 and shoulder nut #54-278 on both volume control and tuning control shafts (Fig. 2). Then install volume and tuning knobs. Tighten set screws.
13. Push the panel retaining strip back into place and tighten the 8/32 hex-head retaining strip mounting screws.
14. Replace dial scale trim plate. Connect "A" lead to terminal block near steering column behind instrument panel as shown in figure 3.

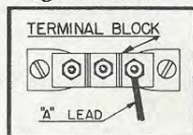


FIG. 3

FRONT SPEAKER INSTALLATION

1. Remove the 8/32 hex-head screw which is to the left of the windshield wiper control bracket, from the panel retaining strip (Fig. 2).
2. Using the same screw, mount the rear seat speaker volume control and bracket assembly S-15189 (Fig. 2).
3. Plug the volume control and bracket assembly speaker cable into the set speaker socket.
4. Remove the right hand kick pad from the car.
5. Knock out the scored (6 inch diameter) circular portion of the kick pad making a hole for the speaker.
6. From the back side of the kick pad push the round speaker screen #74-53 through the hole.
7. Holding the speaker in place against the screen, place trim ring #188-115 around the screen on the front side of the kick pad (Fig. 4).
8. Line up the mounting holes of the speaker with those in the screen and trim ring. Mount the speaker to the kick pad using the four flat washers #93-719, the four lock washers #93-126, four screws #112-739, and the four nuts #54-30 (Fig. 4).
9. Replace the kick pad.
10. Dress the speaker cable over the top of the kick pad, behind the instrument panel and insert the plug of the speaker cable into the socket of the rear speaker volume control and bracket assembly S-15189 (Fig. 2).

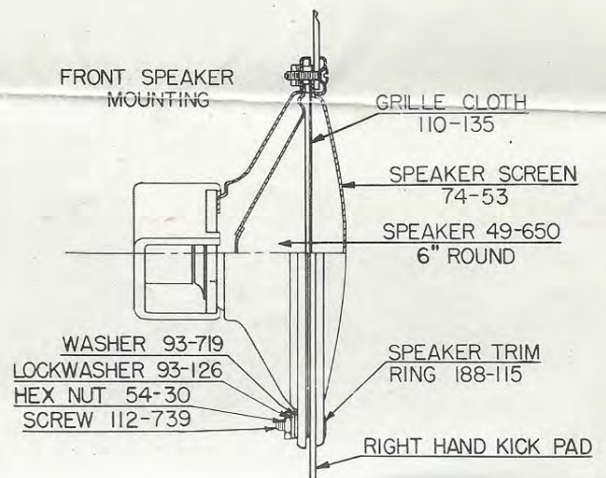
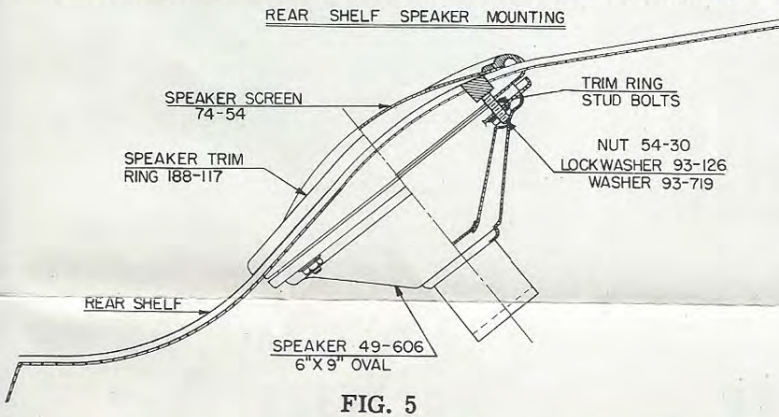


FIG. 4

REAR SPEAKER INSTALLATION

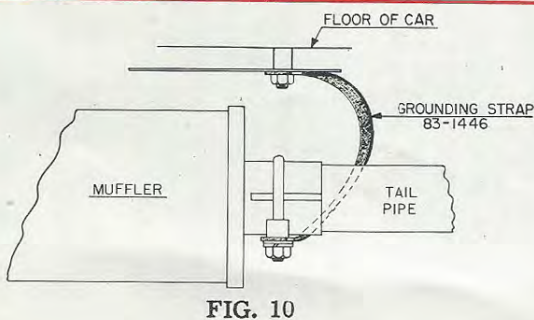
1. Knock out scored oval portion of rear shelf.
2. Place speaker screen #74-54 into position over the hole.
3. Fit speaker trim ring #188-117, over the speaker screen and adjust so that the four mounting studs fit through the mounting holes around the oval hole of the metal rear shelf (Fig. 5). The side marked (TOP) toward rear window.
4. Open luggage compartment door and place the 6" x 9" oval speaker over the four protruding stud bolts of the trim ring.
5. Secure into position with the four flat washers #93-719, the four lockwashers #93-126 and the four hex-nuts #54-30 (Fig. 5).
6. Plug the tips of the rear speaker extension cable located at the left side of the luggage compartment into the pin jacks of rear speaker.
7. Insert the plug end of the rear extension speaker cable, located near the top of the left kick pad, into the socket of the volume control and bracket assembly (Inset - Fig. 2) Rotating the knob of the control and bracket assembly #S-15189 changes the volume of the rear speaker. The volume of both the front and rear speaker is changed by the volume control knob on the receiver (Fig. 1).
8. Plug antenna cable into antenna socket of set. (Fig. 2)



FOOT CONTROL SWITCH INSTALLATION

1. Remove the floor mat around the clutch pedal.
2. Install the Foot Selector on the floor plate. Fasten with 3 #10 x 1/2 in. sheet metal screws supplied with foot switch, using three holes already punched in the floor plate. Dress the cable so that the plug can be inserted into the foot switch cable socket on the receiver.
3. Replace floor mat and cut a 1-5/8 in. diameter hole for the switch.

IMPORTANT: Turn the receiver on and allow it to operate for approximately 15 minutes. Tune in a weak station at approximately 1200 Kc. Adjust the antenna trimmer condenser (see Fig. 2) with a small screw driver for maximum signal. After receiver is installed, remove trim plate and adjust the black cardboard sleeve over the pilot light so the slot in the sleeve directs the light straight down and on the dial pointer, not on the dial scale background. Replace trim plate.



INTERFERENCE ELIMINATION

CAUTION: Use the utmost care in following operations to insure freedom from motor noise. Be sure that good ground contacts are made between the interference condensers and the car body. If necessary, clean away paint or dirt with emery paper. Tighten all nuts and bolts securely.

Cut the center high tension wire near the distributor and install the #63-1046 suppressor as illustrated in Figure 6. Install #80-145 hood grounding strip as illustrated in figure 7.

Install generator condenser #22-920 on generator as shown in figure 8. Connect condenser lead to armature terminal on generator.

Mount condenser #22-1326 on the ignition coil bracket. Connect the lead to the battery terminal of the coil as shown in figure 9.

Bond the exhaust tail pipe to the car body with ground strap #83-1446 as shown in figure 10.

